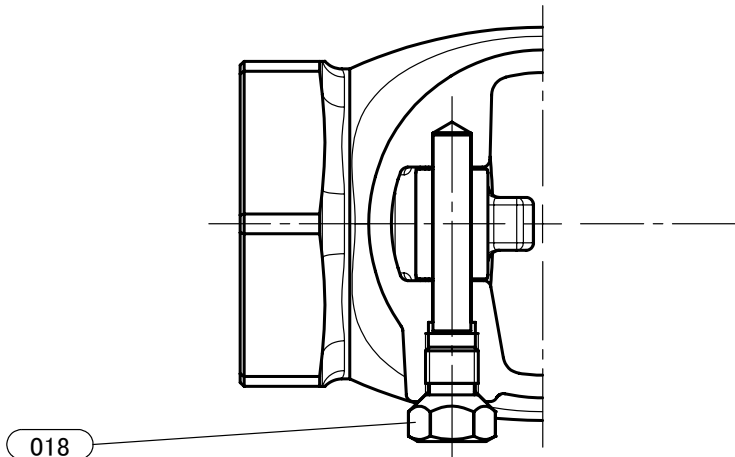
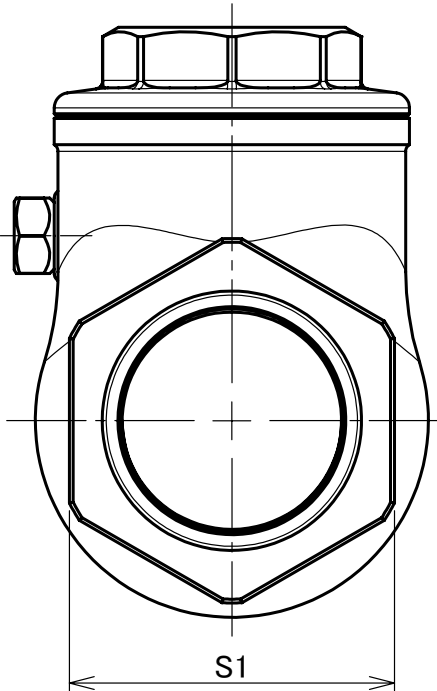
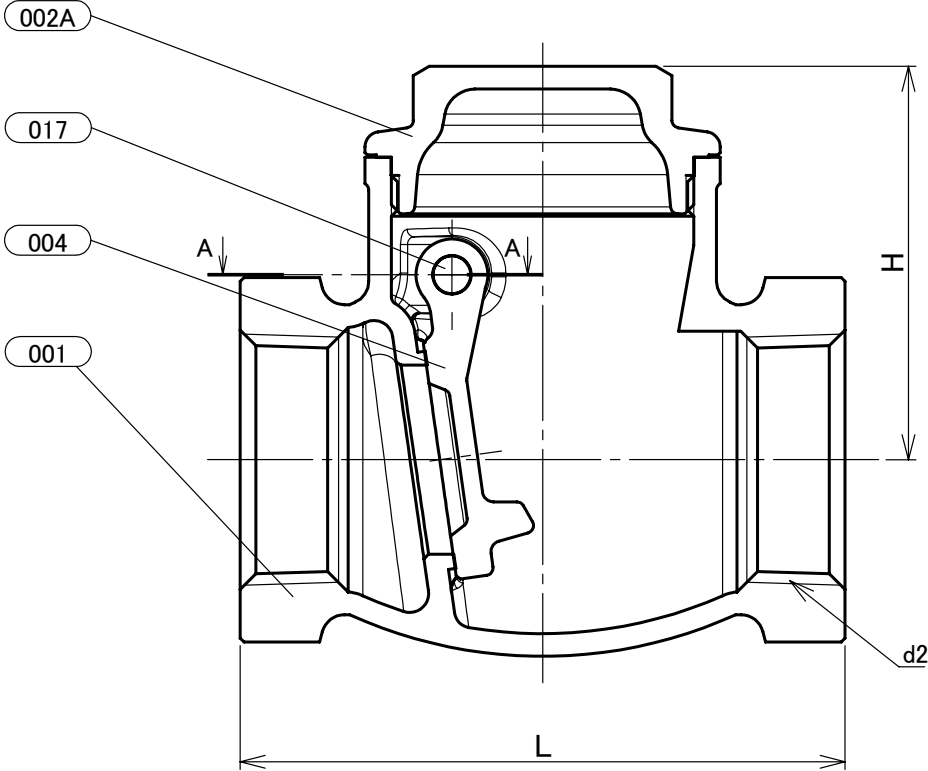
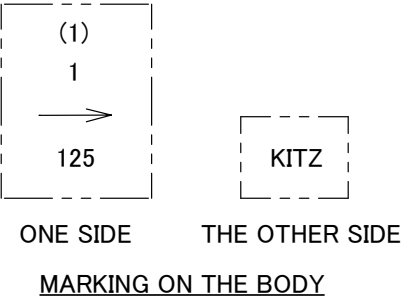


NO.	NAME OF PARTS	Q'TY	MATERIALS	SPECIFICATIONS
001	BODY	1	CAST BRONZE	CAC
002A	CAP	1	FORGED BRASS	C3771
004	DISC	1	FORGED BRASS	C3771
017	HINGE PIN	1	BRASS	C3604
018	PLUG	1	BRASS	C3604



SECTION A-A



DIMENSIONS		UNIT:mm			
NOMINAL SIZE					
B	A	d2	H	L	S1
3/8	10	Rc3/8	39	53	23
1/2	15	Rc1/2	39	60	28
3/4	20	Rc3/4	45	70	35
1	25	Rc1	52	80	43
1 1/4	32	Rc1 1/4	62	92	52
1 1/2	40	Rc1 1/2	67	102	59
2	50	Rc2	79	122	72
2 1/2	65	Rc2 1/2	91	150	87
3	80	Rc3	102	165	102

NOTE (1) VALVE SIZE IDENTIFICATION.  
(2) CHANGE OF SHAPE WHICH WILL NOT AFFECT THE VALUE IN THE DIMENSION TABLE.  
OR RIBS AND BOSSES WHICH WILL NOT AFFECT THE VALVE INSTALLATION MAY NOT BE SHOWN IN THIS DRAWING.

MARKING	
STANDARD	FACE TO FACE OR END TO END
	END CONNECTION
	WALL THICKNESS
	PRESSURE TEST
PRODUCT CODE	
FIGURE	

CLASS 125 CAST BRONZE SWING CHECK VALVE  
SCREWED ENDS

SCREWED CAP.

DATE APPD	2023/06/27
APPD BY	Y. Kono
CHKD BY	Y. Maruyama
DRAWN BY	S. Amano

DRAWING NO.	REV
R10-008741	01
KITZ CORPORATION	